



Opalina

Echeveria

- **Cute, chunky leaves** store lots of water and enable this plant to survive long, hot droughts
- **Mottled, pastel color palette** that can show a range of blue-green, cream, and pink tones depending on its sun exposure
- **Easy to propagate** from a mature, healthy leaf to multiply your collection and share the 'Opalina' love
- **Grows large** into an 8" diameter rosette when grown in well-draining conditions with lots of sunshine

Zone: 10 (30°F)

The Ultimate Succulent Club™



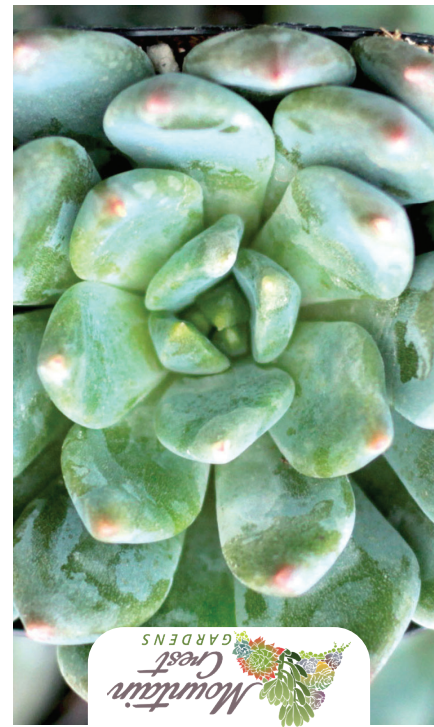
Fleur Blanc

Echeveria

- **Classic rose-shaped** succulent with powder blue foliage and delicately pointed tips
- **Rose pink highlights** blush at the leaf edges when moderately stressed by direct sun and drought
- **Powdery farina** (epicuticular wax) helps this plant tolerate arid conditions and gives it a matte finish
- **Easy windowsill plant** that thrives with full sun, drought, rocky soil, and deep but infrequent water

Zone: 10 (30°F)

The Ultimate Succulent Club™



Blue Wren

Echeveria

- **Chunky leaves** with somewhat pointed tips can stand upright in a tight rosette
- **Strong blue tones** stand out in arrangements and full sun keeps them vibrant
- **Powdery coating** of farina gives an elegant, matte finish
- **Thrives in full sun** and rocky soil, with deep water only when the leaves go limp

Zone: 10 (30°F)

The Ultimate Succulent Club™



Debbie

Gratopetalum x E. amethystinum

- **Pink, lilac, and peach tones** with the most vibrant pigments appearing when grown outdoors or under a grow light
- **Low, open rosette** of long, slender leaves that can reach about 8.0" in diameter at maturity
- **Tolerates full sun** once established in part due to a thick covering of natural, powdery wax
- **Easy to grow** and propagate in well-draining pots / soil with deep but infrequent watering

Zone: 10 (30°F)

The Ultimate Succulent Club™



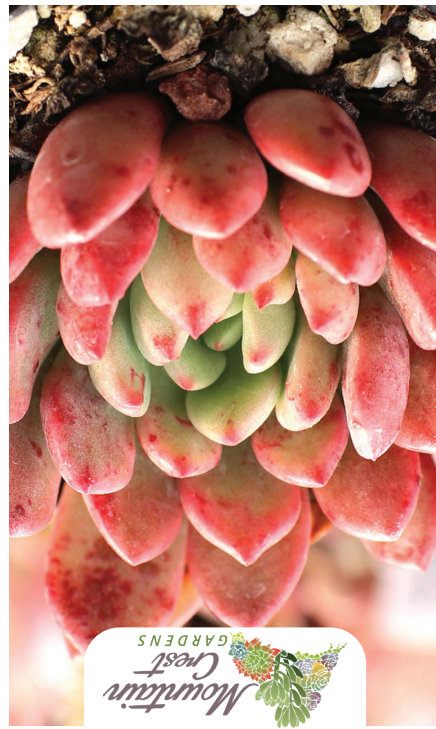
Lara

Echeveria

- **Icy blue tones** get a matte finish from a covering of natural wax
- **Rounded leaves** grow even more cupped with time, forming a low, open rosette
- **Strong grower** and can reach up to 4" in diameter when grown in full sun
- **Hybrid cross** of *Echeveria secunda* x *Echeveria minima*

Zone: 10 (30°F)

The Ultimate Succulent Club™



Bashful

Gratopetalum x Echeveria

- **Upright rosette** of leaves that manage to be chunky, long, and slender, somewhat like a string bean
- **Color changer** ranging from mint green in partial sun to a vibrant pink in full sun
- **Blooms in spring** with pale yellow to white flowers on tall bloom stalks
- **Grows wide over time** but doesn't develop a tall, bare stem like many mature Graptoveria

Zone: 10 (30°F)

The Ultimate Succulent Club™